



## President's Report Spring forth ASHRAE!

Hello ASHRAE Dallas!

It was great to see many of you at our events in February! Thanks to Kris Gonzalez for speaking at our dinner meeting. Thanks to Anthony Gonzalez with our Student Activities Committee who announced our FE Exam Scholarship winners. Shout out to Caleb, Quinn, the folks at the ASHRAE Fort Worth Chapter, and, most importantly, Hop & Sting Brewery, for putting together an awesome refrigeration tour. On Valentine's Day, we joined DISD at their Stem Expo at Fair Park for a really fun day with the students. Lastly, our ASHRAE Region VIII leadership hosted their annual incoming President's Training on Feb 27-28 at MJEC.

We have a full slate of events again this month! We will host Mick Schwedler, 2021-2022 ASHRAE President, for a GBCI and AIA Approved technical discussion centered on chilled water systems: common mistakes and how to avoid or mitigate them. Our annual St. Patty's Day YEA Happy Hour will be BlackFriar Pub hosted by DXS on Monday March 16. The Women in ASHRAE (WIA) Committee is hosting a glassblowing event on Thursday May 19. Both the YEA and WIA events are free of charge. All events are on the website so register today!

Our Spring Golf Classic at Rangers Golf Club on April 17 is on the website. We are 25% full so sign up today. Most importantly, we need Sponsors! Reach out to Clare at [rp@dallas-ashrae.org](mailto:rp@dallas-ashrae.org).

Finally, the Chapter Regional Conference (CRC) in Little Rock on April 24-25. We encourage our members who are looking to get involved in the Chapter to attend. Feel free to reach out to me with any questions.

Thank you to our Members, Board, Committee Members and Chairs, and all of our Guests and Volunteers for your support of ASHRAE and the Dallas chapter!

Tim Campbell, CPD  
ASHRAE Dallas Chapter President 2025-2026  
[president@dallas-ashrae.org](mailto:president@dallas-ashrae.org)



*Tim Campbell*  
Dallas Chapter President

MARCH 2025, ISSUE 6

## WHAT'S INSIDE THIS ISSUE:

### **President's Report**

- *Spring forth ASHRAE!*

### **Note from the President-Elect**

- *Mar. 11th Next Meeting*

### **Research Promotion**

- *Spring Golf Tournament!*

### **Attention Dallas ASHRAE!**

- *WIA/YEA Glassblowing Event*
- *St. Patrick's Happy Hour*

### **Sustainability Report**

- *Demand Response & Grid-Interactive Buildings*

### **Membership Promotion**

- *Welcome new members!*

### **Message from the Editor**

- *Did you know?*

# President Elect/CTTC Report



Hello Dallas ASHRAE Chapter!

Thank you to everyone who attended last month's presentation. We thank Kris Gonzalez for filling in with his presentation on Sound Control Codes and Standards. We hope everyone enjoyed the presentation!

We are excited about our next dinner meeting on Wednesday, March 11<sup>th</sup> at Maggiano's Northpark. We have DL and former society president Mick Schwedler presenting 'Chilled Water Systems for YEA Members: What Baby Boomers and Gen Xers Have Done Wrong! (Part 1). We are excited to have him present and hope you all come out.

Check in starts and networking starts at 5:30pm. Don't miss this great presentation and great food!



TICKETS:  
\$35 ASHRAE MEMBERS  
\$60 NON-MEMBERS / GUESTS  
\$10 LATE REGISTRATION FEE AFTER 10PM ON MONDAY FEB. 9TH  
ON-SITE REGISTRATION IS AVAILABLE.  
PLEASE BE PREPARED TO PAY CASH, CARD, OR CHECK FOR THE REGISTRATION FEE + \$10 LATE FEE.



**SEE YOU SOON  
ASHRAE!**

## **MEETING CALENDAR:**

~~8/20/2025 – NATHAN KEGEL – ADVANCES IN HVAC LOAD CALCS~~

~~9/10/2025 – CHRISTIAN TABOR, DL – AN INTRODUCTION TO ANSI/ASHRAE STANDARD 55~~

~~10/8/2025 – SAM CLEMENS – DESIGNING WITH AIR TURN OVER UNITS – STUDENT NIGHT~~

~~11/12/2025 – DOUG BRONSON – WHEN YOU DON'T KNOW WHAT TO DO~~

~~12/10/2025 – TIM WENTZ, DL – THE ETHICS OF DISPUTES: MANAGING THE CONSTRUCTION CLAIM PROCESS~~

~~1/19/2026 – IEQ PANEL – HEALTHY BUILDINGS: DESIGNING FOR LIFE~~

~~2/11/2026 – KRIS GONZALEZ – CODES AND STANDARDS ON SOUND CONTROL~~

**3/11/2026** – MICK SCHWEDLER, DL – CHILLED WATER SYSTEMS FOR YEA MEMBERS: WHAT THE BABY BOOMERS AND GEN XERS HAVE DONE WRONG!!! (PART 1)

**4/8/2026** – JULIA KEEN, DL – TARGETING SUCCESS: IMPROVE EMPLOYEE SATISFACTION, RETENTION, AND PROFIT

**5/13/2026** – IP SYSTEM INTEGRATION

Thank you

DALLAS ASHRAE  
LEADERS



**PRESIDENT**  
**TIM CAMPBELL**



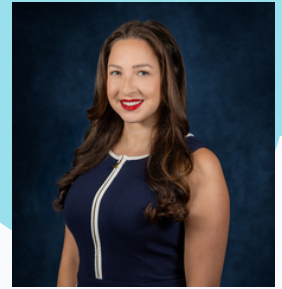
**PRESIDENT-  
ELECT/CTTC**  
**CHRISTINE MINER**



**TREASURER**  
**CIARAN KAGER**



**RESEARCH  
PROMOTION CHAIR**  
**CLARE CROMWELL**



**SECRETARY/ECC**  
**GABRIELA ARENIVAS**



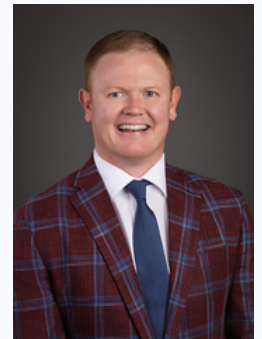
**MEMBERSHIP  
PROMOTION**  
**KATHERINE REYNAL**



**BOARD MEMBER AT-LARGE**  
**DANIEL WINE**



**PAST PRESIDENT/ASHRAE  
DALLAS AMBASSADOR**  
**QUENTIN MACKIE**



**BOARD MEMBER AT-LARGE**  
**ERIC BORDERS**

**TO GET INVOLVED IN  
THE LOCAL CHAPTER  
OF ASHRAE IN  
DALLAS AND TO  
LEARN MORE, PLEASE  
CONTACT US AT:**

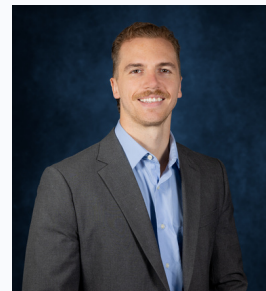
[MEMBERSHIP@DALLAS-ASHRAE.ORG](mailto:MEMBERSHIP@DALLAS-ASHRAE.ORG)



**SUSTAINABILITY**  
**MIKE BROWN**



**YOUNG ENGINEERS OF  
ASHRAE (YEA) & WIA**  
**CALEB BURGESS, KEIL  
SENER, & JOELLE  
SHOEMAKER**



**GAC**  
**ALEX BEREND**

**STUDENT ACTIVITIES**  
**ANTHONY GONZALEZ**

**REFRIGERATION**  
**QUINN BOONE**

**NEWSLETTER**  
**SETH ANGELONE**

**HISTORIAN**  
**REBEKAH HANSEN**



## Research Promotion Report

*Research Promotion Chair -  
Clare Cromwell*

# INCOMING SPRING GOLF TOURNAMENT!

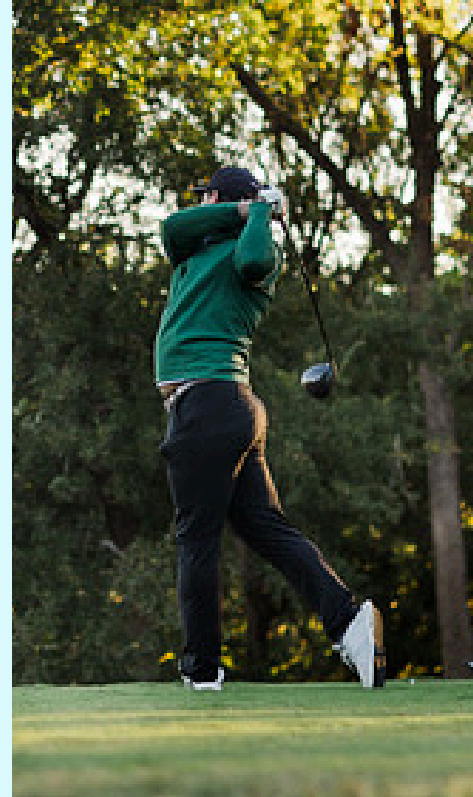
Hi everyone,

We're excited for our upcoming Spring Golf Tournament that will be held at Texas Rangers Golf Club on Friday, April 17th, with an afternoon tee-off. It's always a great time, and we're looking forward to a fun day on the course.

Team and sponsor sign-ups are live on our website! You can view details for both and register here: [ASHRAE Dallas Chapter - Upcoming Events](#)

We are also currently seeking additional annual sponsors for our chapter. If you or your organization may be interested, we would love to connect—please don't hesitate to reach out.

Thank you for your continued support!



[CLICK HERE FOR ASHRAE DALLAS CHAPTER - SPONSORSHIP OPPORTUNITIES OR SEE THE FOLLOWING PAGE!](#)



Dallas Chapter

# 2026 Sponsorship Opportunities

## How does your company want to be recognized by the North Texas Engineering and Commercial Construction Community over the next year?

*NOW is the time to choose your level of support and the quality & quantity of recognition that fits with your company's sales and marketing goals. Take a look at the options below and choose how you & your company wants to make a lasting industry impact over the coming year and beyond.*



### **SPONSOR BENEFIT POINTS**

By selecting your level of support, you're adding these additional highly valuable benefits for your team to those included in your sponsor package. Choose any combination that works best for you and make the most of each interaction with the Chapter Members!

#### **POINTS PER LEVEL**

|           |       |   |
|-----------|-------|---|
| Platinum  | 8 pts | <ul style="list-style-type: none"> <li>• Meeting Check-in Table Host (1 pt)</li> <li>• "Meeting Brought to You by" Host (1 pt)</li> </ul> |
| Gold      | 6 pts | <ul style="list-style-type: none"> <li>• Newsletter Sponsor of the Month (2 pts)</li> </ul>   |
| Silver    | 4 pts | <ul style="list-style-type: none"> <li>• Meeting Announcement with 5 minutes before the meeting and preso (2 pts)</li> </ul>              |
| Bronze    | 2 pts | <ul style="list-style-type: none"> <li>• Company Bio and Line Card Email (3 pts)</li> </ul>   |
| Engineers | 2pts  |   |

Sponsorship Levels are listed below. Feel free to reach out to our team with any questions about these benefits or upcoming events.

*Preview our events for even more sponsorship opportunities!*

Questions: Clare Cromwell [rp@dallas-ashrae.org](mailto:rp@dallas-ashrae.org)

Payment: Ciaran Kager [treasurer@dallas-ashrae.org](mailto:treasurer@dallas-ashrae.org)

**VISIT [DALLAS-ASHRAE.ORG](http://DALLAS-ASHRAE.ORG) FOR MORE INFO & CONTACTS**



## PLATINUM SPONSOR: \$10,000

### 8 Sponsor Benefit Points



#### Platinum Level Sponsorship Details

- Signage at each meeting as a Platinum Sponsor and ASHRAE Partner
- Recognition on the ASHRAE Dallas website as a Platinum sponsor and ASHRAE Partner
- ASHRAE Partner banner at each event
- Six (6) tickets to the Family Event
- Four (4) fully paid participants at the Sporting Clay Tournament
- Four (4) fully paid participants at the Fall and Spring Golf Tournaments
- Admission for six (6) to the Past President's Luncheon
- Tabletop display space at the Sporting Clay Tournament
- Manned Hole sponsor at the Fall and Spring Golf Tournaments
- Recognition in our monthly newsletter "The Texas Norther" as a Platinum Sponsor



## GOLD SPONSOR: \$7,500

### 6 Sponsor Benefit Points



#### Gold Level Sponsorship Details

- Signage at each meeting as a Gold Sponsor and ASHRAE Partner
- Recognition on the ASHRAE Dallas website as a Gold Sponsor
- ASHRAE Partner banner at each event
- Four (4) tickets to the Family Event
- Two (2) fully paid participants at the Sporting Clay Tournament
- Four (4) fully paid participants at the Fall or Spring Golf Tournaments
- Admission for four (4) to the Past President's Luncheon
- Tabletop display space at the Sporting Clay Tournament
- One (1) Manned Hole sponsor at the Spring or Fall Golf Tourney
- One (1) Un-Manned Hole sponsor at the Spring or Fall Golf Tourney
- Recognition in our monthly newsletter "The Texas Norther" as a Gold Sponsor



## SILVER SPONSOR: \$5,000 4 Sponsor Benefit Points



### Silver Level Sponsorship Details

- Signage at each meeting as a Silver Sponsor and ASHRAE Partner
- Recognition on the ASHRAE Dallas website as a Silver Sponsor
- Two (2) Tickets to the Family Event
- Two (2) participants at the Sporting Clay Tournament
- Admission for two (2) to the Past President's Luncheon
- Unmanned hole sponsor at both Golf Tournaments and stand sponsor at the Sporting Clay Tournament
- Recognition in our monthly newsletter "The Texas Norther" as a Silver Sponsor



## BRONZE SPONSOR: \$2,000 2 Sponsor Benefit Points



### Bronze Level Sponsorship Details

- Signage at each meeting as a Bronze Sponsor and ASHRAE Partner
- Recognition on the ASHRAE Dallas website as a Bronze Sponsor
- ASHRAE Partner banner at each event
- Admission for two (2) to the Past President's Luncheon
- Tabletop display space at the Sporting Clay Tournament
- One (1) Un-Manned Hole sponsor at the Spring or Fall Golf Tourney
- Recognition in our monthly newsletter "The Texas Norther" as a Bronze Sponsor



## Engineers for ASHRAE: \$1,500 2 Sponsor Benefit Points



### Engineers for ASHRAE Sponsorship Details

- Signage at each meeting as Engineers for ASHRAE Sponsor firm
- Recognition on the ASHRAE Dallas website as an Engineering Sponsor
- Unmanned hole sponsor at the Golf Tournaments
- Admission for four (4) to Past President Luncheon
- Recognition in "The Texas Norther" as an Engineer for ASHRAE Sponsor



# 2026 SPRING GOLF CLASSIC

FRIDAY, APRIL 17TH • 1PM  
TEXAS RANGERS GOLF CLUB  
701 BROWN BLVD, ARLINGTON, TX 76011

4 PERSON SCRAMBLE -BUY-UP AND ADD-ONS AVAILABLE  
LUNCH AND DINNER INCLUDED - DINNER, AWARDS, AND  
RAFFLES AFTER



REGISTRATION: [DALLAS-ASHRAE.ORG](https://dallas-ashrae.org)  
CONTACT: CLARE CROMWELL - [RP@DALLAS-ASHRAE.ORG](mailto:RP@DALLAS-ASHRAE.ORG)



Keil Senter, Project Manager  
WIA / YEA Chair  
Keil.Senter@texasairsystems.com

## WIA / YEA Chair - Keil Senter

Join us for an evening of networking and fun as we create a mini vase or a whiskey glass!

Please note: this event is limited to ASHRAE Members with a 20-person capacity. Registration closes at 5pm on 3/18. Don't wait - register now!

- Who: ALL ASHRAE Members!
- When: Thursday, March 19 from 4:30pm to 6:30pm
- Where: Dallas Glass Art, 8510 Chancellor Row Dallas, TX 75247
- Cost: FREE!

Email Keil at [women@dallas-ashrae.org](mailto:women@dallas-ashrae.org) with any questions!



WOMEN IN ASHRAE INVITES  
ALL ASHRAE MEMBERS TO

*Join us to  
Experience  
Glassblowing*

CREATE A MINI VASE OR A WHISKEY GLASS!

*Thursday, March 19th  
4:30-6:30pm*

**REGISTER**  
[WWW.DALLAS-ASHRAE.ORG](http://WWW.DALLAS-ASHRAE.ORG)  
**CONTACT**  
**KEIL SENTER**  
[KEIL.SENTER@TEXASAIRSYSTEMS.COM](mailto:KEIL.SENTER@TEXASAIRSYSTEMS.COM)



**DALLAS GLASS ART**  
**8510 CHANCELLOR ROW**  
**DALLAS, TX 75247**

# Demand Response & Grid-Interactive Buildings



Mike Brown, EIT, CEM, LEED AP BD+C  
Sustainability Chair  
Sr. Sustainable Design Engineer, HKS  
mibrown@hksinc.com

## How Smarter Buildings Are Strengthening the Texas Grid

As Texas continues to experience rapid population growth, electrification, and increasingly extreme weather events, grid reliability has become a central concern for building owners, engineers, and facility managers. Rather than relying solely on building new generation capacity, a growing solution lies within the buildings themselves. Smarter, flexible buildings are emerging as powerful tools to help stabilize the grid while reducing operational costs.

## What Is Demand Response?

Demand response (DR) is a strategy in which buildings temporarily reduce or shift electricity usage during periods of peak demand or grid stress. Instead of increasing supply, utilities and grid operators signal participating buildings to lower consumption for a short period of time. This may involve adjusting thermostat setpoints, dimming non-critical lighting, or shifting equipment schedules to off-peak hours. In exchange, building owners can receive financial incentives, performance payments, or reduced demand charges.

## What Are Grid-Interactive Efficient Buildings (GEBs)?

A grid-interactive efficient building goes beyond basic demand response. These buildings are designed to operate efficiently at baseline while also communicating with the electric grid and adjusting loads dynamically in real time. Many incorporate onsite renewable energy, battery storage, or thermal storage systems. By integrating advanced controls and automation, GEBs can respond intelligently to price signals or grid conditions, effectively becoming active energy assets rather than passive consumers.

## Why This Matters in Texas

Texas operates one of the most dynamic electric markets in the country. With extreme summer peak loads, growing electrification of vehicles and buildings, and increased renewable penetration, the grid is under more pressure than ever. During peak events, electricity prices can spike dramatically. Buildings that can reduce demand during these critical windows not only contribute to grid stability but can also capture meaningful cost savings.

## Practical Strategies for Commercial Buildings

Many demand response measures are surprisingly simple to implement. Adjusting cooling setpoints by just two to four degrees during peak hours can significantly reduce load with minimal occupant impact. Pre-cooling strategies allow buildings to shift energy use earlier in the day. Lighting reductions of 10–30% in non-critical areas often go unnoticed. Additionally, non-essential equipment such as water heating or EV charging can be scheduled for off-peak periods. These low-cost operational strategies can unlock substantial peak demand reductions.

# Demand Response & Grid-Interactive Buildings

## The Financial Opportunity

Participation in demand response programs can create measurable financial benefits. Depending on building size and program structure, owners may receive annual incentive payments, avoid peak demand charges, and lower total energy costs. For larger commercial facilities, savings can reach tens of thousands of dollars annually. Beyond direct savings, these strategies also improve resilience and future-proof buildings against increasingly volatile energy markets.

## Looking Ahead: Buildings as Grid Resources

The future of high-performance buildings lies in flexibility. As automation, battery storage, and smart controls continue to advance, more facilities will operate in real-time alignment with grid conditions. Grid-interactive buildings represent a shift in thinking—from energy efficiency alone to energy responsiveness. By embracing demand response and intelligent load management today, building professionals can position their projects at the forefront of resilience, cost certainty, and decarbonization.

## Energy Tip of the Month

Test a “peak hour” HVAC strategy.

Simulate a demand response event by raising cooling setpoints by 2°F for one hour. Monitor occupant feedback and energy use. Many buildings can reduce peak demand with minimal impact on comfort.

HOSTED BY DXS



16 MARCH, 2026

SAINT  
PATRICK'S



HAPPY  
HOUR

BLACKFRIAR PUB

2621 McKinney Ave, Dallas, TX 75204

From 4 PM to 6 PM

All Engineers Welcome!



# Membership Promotion - Katherine Reynal

## SHOUTOUT TO ALL OF OUR NEW MEMBERS!

### DON'T MISS THE 2026 ASHRAE REGION VIII CRC — REGISTER TODAY!

REGISTRATION IS OFFICIALLY OPEN FOR THE 2026 ASHRAE REGION VIII CHAPTER REGIONAL CONFERENCE, AND WE'RE EXCITED TO WELCOME MEMBERS FROM ACROSS THE REGION TO LITTLE ROCK THIS APRIL. THIS YEAR'S CRC WILL FEATURE VALUABLE TECHNICAL SESSIONS, BUSINESS MEETINGS, NETWORKING OPPORTUNITIES, AND MEMORABLE SOCIAL EVENTS DESIGNED TO CONNECT AND INSPIRE OUR ASHRAE COMMUNITY. FOLLOW THE QR CODE TO REGISTER TODAY:



## -Welcome to ASHRAE at Dallas-

- Catherine M Fields
- Beau Aveton
- Corey Bender
- Jacob John Anderson
- John Davidson
- Andy Canales
- Odilon Monroy
- Lee Nordholm
- Oday Hatem
- Sidney Rose Hartz
- Aubrey Dylan Bow
- Harvey Axel Ruvalcaba
- John S Latta
- Mark A Sidhom
- Brian A Hernandez
- JaRee Myers
- Thurmesh Chudasama
- Michael Miller
- Andrew David Pettit
- Dr Yu-Wei Hung
- Daniel Rowlett
- Rachit Shah
- Sarah Paige Waligura
- Carlos Eduardo Rodriguez
- Greg Rodgers
- Chase Wealthier
- Evan Rashid
- Gabriel Ramirez, PE
- Matthew Schnepf
- Kevin J Brock
- Lucero Jones-Ortiz
- Timothy J Daniels

SPOTS ARE FILLING QUICKLY — SECURE YOUR REGISTRATION  
TODAY AND MAKE PLANS TO JOIN US IN LITTLE ROCK!

# Thanks for Reading!

NEWSLETTER CHAIR - SETH ANGELONE

ISSUE #6



## **DID YOU KNOW?**

2026 Women in ASHRAE Leadership Symposium is coming soon! It'll take place April 13-14<sup>th</sup> in Los Angeles. Use the link below to check it out!

<https://www.ashrae.org/conferences/topical-conferences/2026-wia-leadership-symposium>

Welcome back Dallas ASHRAE!

Thanks again for reading through the newsletter!

Please Stay tuned for all the upcoming events. We are very excited to see you throughout the month of March and welcome all new members. As a reminder, please follow Dallas ASHRAE on your preferred social media platform - LinkedIn, Instagram, Facebook, Twitter. Links below!

Thank you,

Seth Angelone  
Dallas ASHRAE Newsletter Chair  
newsletter@dallas-ashrae.org  
Mechanical Engineer | RWB Consulting Engineers  
Cell: (214) 326-1333

